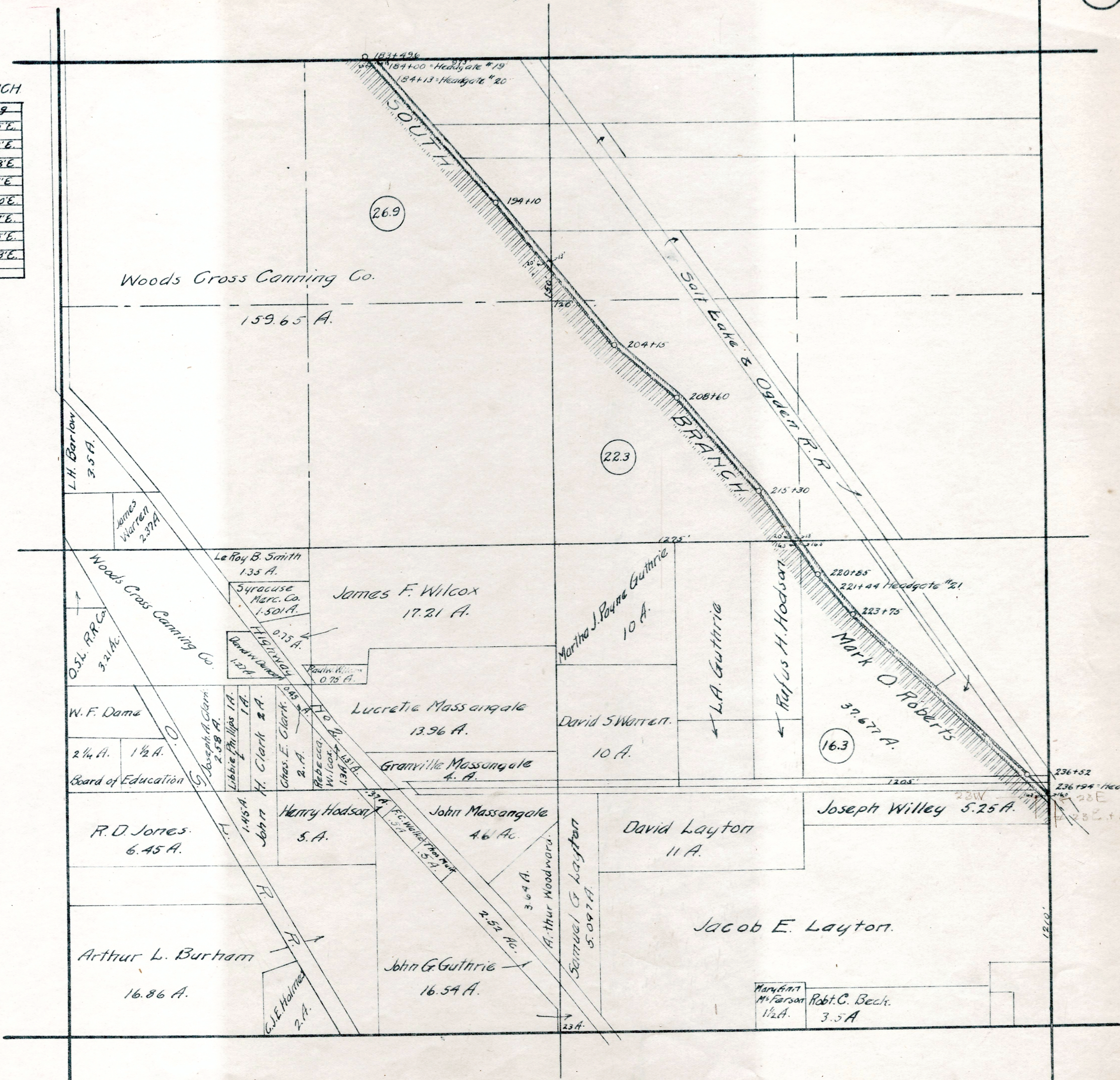


SOUTH BRANCH

Station	Bearing
182+50	541°-45'E.
194+10	539°-02'E.
204+15	548°-38'E.
208+60	540°-15'E.
215+30	535°-00'E.
220+85	540°-27'E.
223+75	546°-45'E.
236+52	545°-53'E.
241+00	



SECTION 1 - T. 4 N. R. 2 W. S.L.M.